



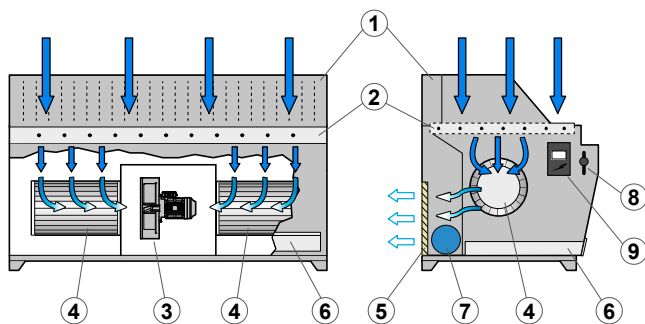
USE

- Suction and filtration of dust produced by sanding

FEATURES

- Built in galvanized metal sheets
- Dust filtration with cartridges made of antistatic aluminized polyester
- Air compressed jet cleaning
- 2 extractable drawers for collected dust
- Final filtration stage with acrylic fiber

COMPONENTS



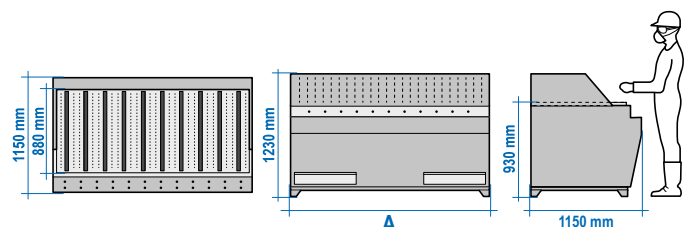
1. Side walls and extraction frontal wall (optional)
2. Vacuum table with scratch-resistant strips
3. Transmission centrifugal aspirator
4. Pleated cartridges in antistatic aluminized polyester
5. Cells with acrylic filters at the outlet
6. Removable collection drawers
7. Compressed air tank
8. Compressed air connection
9. IP55 electrical panel with integrated emergency button

OPTIONAL

- Compressed air connection
- Side walls and frontal suction wall
- Wheel mounted
- Automatic timed filter cleaning system
- Atex vacuum cleaner

TECHNICAL DATA

MODEL	A	FLOW RATE	POWER	CARTRIDGES	Ø CARTRIDGES	CARTRIDGES LENGTH	WEIGHT
	mm	m ³ /h	kW	n	mm	mm	Kg
ZB/SAND/1M	1000	2800	1,1	2	325	400	180
ZB/SAND/15M	1500	3900	1,5	2	325	600	210
ZB/SAND/2M	2000	4300	1,5	4	325	600	250
ZB/SAND/25M	2500	5400	2,2	4	325	700	310
ZB/SAND/3M	3000	6500	2,2	4	325	1000	350





USE

- Suction of dust produced by small restoration works, gluing, etc.
- Suction of sanding dust

FEATURES

- Table ideal for centralised systems, supplied as standard without filter, fan and control panel
- Made of high-grade sheet metal panels
- Adjustable feet to adjust the height of the table according to the operator's needs or to allow installation on not perfectly leveled surfaces
- Easy handling by forklift
- Lateral hole for exhausting the air to be treated

STANDARD SUPPLY

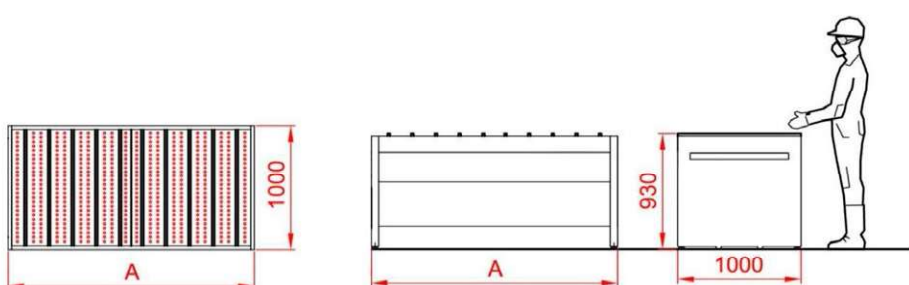
- Galvanized sheet frame
- Scratch-resistant strips
- Adjustable feet

OPTIONAL

- 2 suction side walls and 1 frontal suction wall
- Spark-proof metallic filter

TECHNICAL DATA

MODEL	A	MINIMUM RECOMMENDED FLOW RATE	CONNECTION TUBE DIAMETER	WEIGHT
	mm	m ³ /h	mm	Kg
ZB/E/15C	1550	2700	220	110
ZB/E/2C	2050	3600	250	145
ZB/E/25C	2550	4500	270	180
ZB/E/3C	3050	5400	300	210





USE

- Welding operations
- Glueing operations
- Blowing operation with compressed air
- Grinding and deburring operations
- Powder weighing operations
- Operations with dusty substances
- Operations with odorous substances
- Toner cartridge remanufacturing operations for printers

FEATURES

- Strong structure with metal sheet 2-3 mm thickness
- Strong table top in perforated metal sheet
- Available with scratch resistant top in polypropylene
- Dust collection drawers
- Internal manifold with anti-spark metal pre-filter function and for homogeneous distribution of suction
- Removable front and side walls
- Available in version for centralized system (ZB/C) or already coupled to fan (ZB)
- Available in ATEX Ex II 3D version

STANDARD SUPPLY

- Removable front and side walls
- Centrifugal fan (only ZB models)
- Dust collection drawers

PRODUCTIONS



TECHNICAL DATA

ZB [Downdraft tables for welding fumes, with suction walls and metallic mesh filter. Complete with fan.]

MODEL	AIR FLOW m ³ /h	FAN	POWER kW	ΔP AVAILABLE mm H ₂ O	MAX LOAD kg/m ²	A mm	B mm
ZB1	2400	DTD 312	1,1/1400	25	150	1210	950
ZB15	3400	DTD 314	1,5/1400	25	150	1760	1500
ZB2	4200	DTD 352	2,2/1400	40	150	2160	1900
ZB3	6100	DTD 354	3/1400	40	150	3160	2900

ZB/C [Downdraft tables for fumes and grinding dust, with suction walls and metallic mesh filter. For centralized system, without fan.]

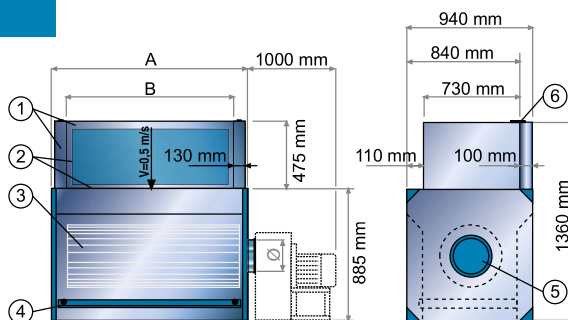
MODEL	Ø IN mm	MINIMUM RECOMMENDED FLOW RATE FOR FUMES AND ODOURS m ³ /h	MINIMUM RECOMMENDED FLOW RATE FOR DUST m ³ /h	ΔP STATIC mm H ₂ O	MAX LOAD kg/m ²	A mm	B mm
ZB1/C	250	2400	3600	25	150	1210	950
ZB15/C	300	3400	5200	25	150	1760	1500
ZB2/C	350	4200	6300	25	150	2160	1900
ZB3/C	400	6100	9200	25	150	3160	2900

ZB/S [Downdraft tables without walls]

Tables have a smaller diameter and a lower flow rate. The exact values depend on the type of system

COMPONENTS AND DIMENSIONS

1. Removable suction walls
2. Suction grilles
3. Metallic pre-filter
4. Collection drawer
5. Suction
6. Wall fixing clips

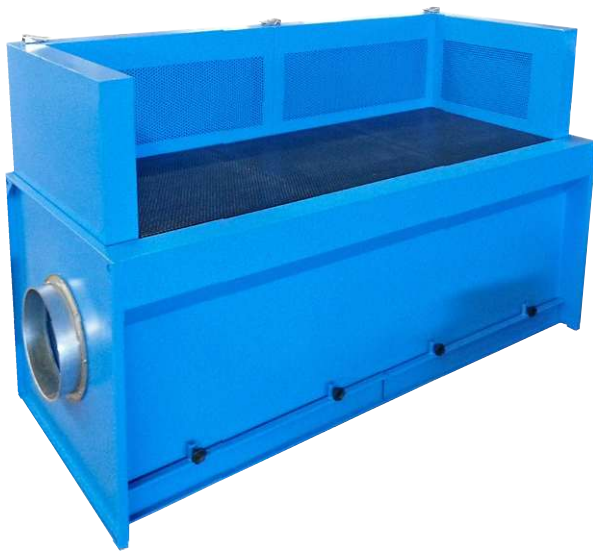


OPTIONAL

- **[BOX/INS95]** Soundproofing box for fan models up to 350
- **[APE/LAT]** Hinged side walls for side opening
- **[ZB/ATEX]** Atex Ex II 3D version

SPARE PARTS

- **[CART/PREF]** Cartuccia in lamiera forata
- **[P/ZB]** Piano in lamiera forata (da 1 a 3 metri)



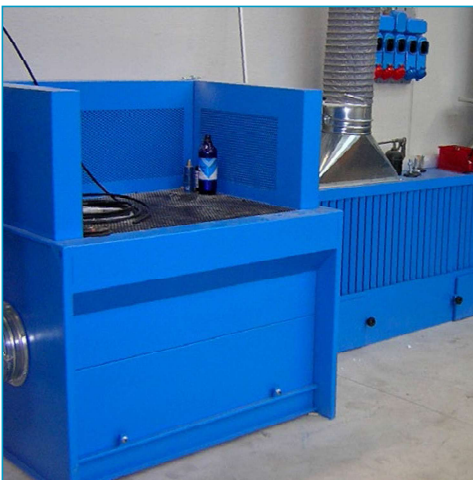
USE

- Blowing parts cleaning operations
- Mechanical processing operations: grinding and deburring on metals that don't produce sparks
- Powder product weighing operations
- Operations with dusty substances
- Operations to regenerate toner cartridges for printers

FEATURES

- Sturdy construction with electro-welded 2-3 mm sheet metal
- Sturdy perforated sheet top
- Available with scratch-resistant perforated polypropylene top
- Coarse parts collection tray
- High performance filter cartridge with manual compressed air cleaning (with button)
- Cleaning management timer
- Removable side and front walls
- Available in version for centralized plants (ZB/POL/C) or already coupled to fan (ZB/POL)
- Available in ATEX Ex II 3D version

PRODUCTIONS



STANDARD SUPPLY

- Removable side and front walls
- Fan (ZB POL models only)
- Collection drawer

RESTRICTIONS

- Not suitable for explosive or flammable dusts, hygroscopic dusts, dusts with humidity > 5%
- Not suitable for mechanical machining of grinding and deburring on metals that produce sparks



TECHNICAL DATA

ZB/POL [Suction benches for powders (5–30 µm UNI 11304-1), with cartridge. Complete with fan]

MODEL	FILTERING SURFACE m ²	CARTRIDGE HEIGHT (Ø 570 MM) mm	AIR FLOW RATE m ³ /h	FAN	POWER kW/rpm	ΔP AVAILABLE mm H ₂ O	MAX LOAD Kg/m ²	A mm	B mm
ZB/POL1	33,5	700	3600	E 353	3/2800	70	150	1210	950
ZB/POL15	57	1300	5200	E 402	4/2800	90	150	1760	1500
ZB/POL2	77	1700	6300	E 403	5,5/2800	90	150	2160	1900

ZB/POL/C [Suction benches for powders (5–30 µm UNI 11304-1), with cartridge. For centralized plants, without fan]

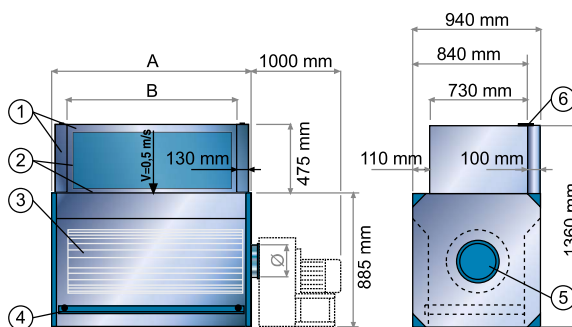
MODEL	Ø IN mm	FILTERING SURFACE m ²	CARTRIDGE HEIGHT (Ø 570 MM) mm	MINIMUM RECOMMENDED AIR FLOW RATE m ³ /h	ΔP STATIC mm H ₂ O	MAX LOAD Kg/m ²	A mm	B mm
ZB/POL1C	250	33,5	700	3600	90	150	1210	950
ZB/POL15C	300	57	1300	5200	90	150	1760	1500
ZB/POL2C	350	77	1700	6300	90	150	2160	1900

ZB/POL/S [Suction benches for powders (5–30 µm UNI 11304-1), with cartridge, without walls. For centralized plants, without fan]

They have a smaller diameter and a lower air flow rate. The exact values depend on the type of plant

COMPONENTS AND DIMENSIONS

1. Removable suction walls
2. Suction grilles
3. Cartridge filter
4. Collection drawer
5. Suction inlet
6. Wall fixing clip



OPTIONAL

- **[ZB/POL/JET]** Compressed air automatic cleaning with timer
- **[ZB/POL/ATEX]** Atex Ex II 3D version
- **[CUP/LEXAN]** Lexan upper cover
- **[CUP/PO]** Lexan upper cover and sliding front door
- **[GRL]** Wooden grid, 35x30 mm size of strips
- **[APE/LAT]** Hinged side walls for side opening
- **[PPF]** Anti-scratch perforated polypropylene top (from 1000 mm to 3000 mm)

SPARE PARTS

- **[CAR]** Aluminised non-woven fabric cartridge, Ø 570 mm, (ht. from 700 mm to 1700 mm)
- **[P/ZB]** Perforated sheet top (from 1 to 2 meters)



USE

- Sanding operations
- Polishing of composite materials
- Bench work in model shops
- Counter processing of fragile and delicate products
- Dusty products

FEATURES

- Sturdy construction with electro-welded 2-3 mm sheet metal
- Sturdy perforated sheet top
- Upper cover
- Available with scratch-resistant perforated polypropylene top
- Coarse parts collection tray
- High performance filter cartridge with manual compressed air cleaning (with button)
- Cleaning management timer
- Removable side and front walls
- Available in version for centralized plants (ZB/POL/F/C) or already coupled to fan (ZB/POL/F)
- Available in ATEX Ex II 3D version

PRODUCTIONS



STANDARD SUPPLY

- Fan (ZB/POL/F only)
- Collection drawer



TECHNICAL DATA

ZB/POL/F [Suction benches with walls, for powders (5–30 µm UNI 11304-1), with cartridge and compressed air cleaning. Complete with fan]

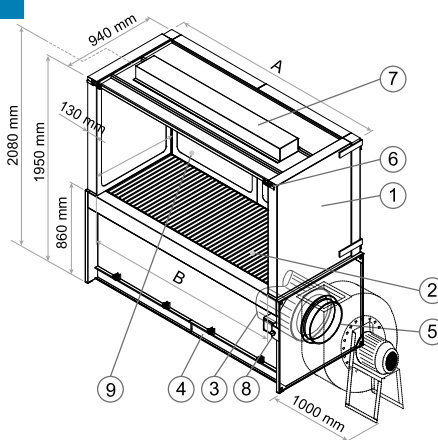
MODEL	FILTERING SURFACE m ²	CARTRIDGE HEIGHT (Ø 540 MM) mm	AIR FLOW RATE m ³ /h	FAN	POWER kW/rpm	ΔP AVAILABLE mm H ₂ O	MAX LOAD Kg/m ²	A mm	B mm
ZB/POL/F1	33,5	700	3600	E 353	3/2800	70	150	1210	950
ZB/POL/F15	57	1300	5200	E 402	4/2800	90	150	1760	1500
ZB/POL/F2	77	1700	6300	E 403	5,5/2800	90	150	2160	1900

ZB/POL/F/C [Suction benches with walls, for powders (5–30 µm UNI 11304-1), with cartridge and compressed air cleaning. Without fan]

MODEL	Ø IN mm	FILTERING SURFACE m ²	CARTRIDGE HEIGHT (Ø 540 MM) mm	MINIMUM RECOMMENDED AIR FLOW RATE m ³ /h	ΔP STATIC mm H ₂ O	MAX LOAD Kg/m ²	A mm	B mm
ZB/POL/F1C	250	33,5	700	3600	90	150	1210	950
ZB/POL/F15C	300	57	1300	5200	90	150	1760	1500
ZB/POL/F2C	350	77	1700	6300	90	150	2160	1900

COMPONENTS AND DIMENSIONS

1. Openable side suction walls
2. Suction grilles
3. Cartridge filter
4. Collection drawer
5. Suction inlet
6. Wall fixing clip
7. Lighting lamp
8. Manual compressed air cleaning button
9. Suction front wall



OPTIONAL

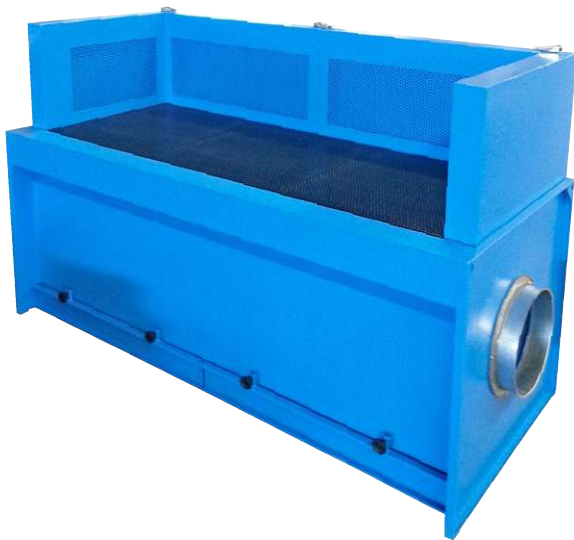
- **[ZB/POL/JET]** Compressed air cleaning with timer
- **[ZB/POL/ATEX]** Atex Ex II 3D version
- **[CUP/LEXAN]** Lexan upper dome
- **[CUP/PO]** Lexan upper dome and sliding front door
- **[APE/LAT]** Hinged side walls for side opening
- **[PPF]** Anti-scratch perforated polypropylene top (from 1000 mm to 3000 mm)

SPARE PARTS

- **[CAR]** Aluminised non-woven fabric cartridge, Ø 570 mm, (ht. from 700 mm to 1700 mm)
- **[P/ZB]** Perforated sheet top (from 1 to 2 meters)

ZB POL JET

SUCTION BENCH WITH CARTRIDGE FILTER



USE

- Blowing parts cleaning operations
- Mechanical processing operations: grinding and deburring on metals that don't produce sparks
- Powder product weighing operations
- Operations with dusty substances
- Operations to regenerate toner cartridges for printers

FEATURES

- Sturdy construction with electro-welded 2-3 mm sheet metal
- Sturdy perforated sheet top
- Available with scratch-resistant perforated polypropylene top
- Coarse parts collection tray
- High-performance filter cartridge with counter-current compressed air cleaning
- Removable side and front walls
- Available in version for centralized plants (ZB/POL/JET/C) or already coupled to fan (ZB/POL/JET)
- Available in ATEX Ex II 3D version

STANDARD SUPPLY

- Removable side walls and front wall
- Automatic compressed air cleaning
- Fan (only in ZB/POL/JET models)
- Collection drawer

TECHNICAL DATA

ZB/POL/JET [Suction benches for powders (5–30 µm UNI 11304-1), with cartridge and compressed air cleaning. Complete with fan]

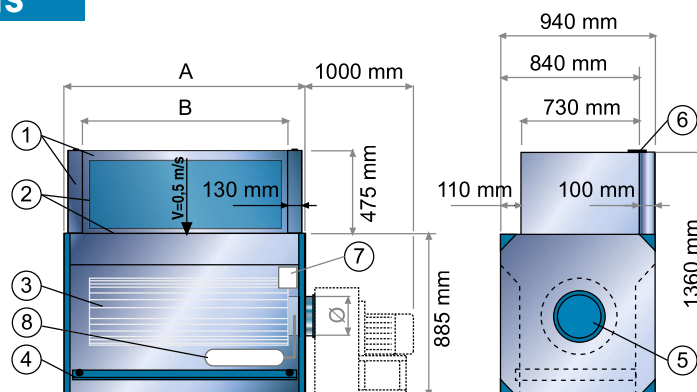
MODEL	FILTERING SURFACE m ²	CARTRIDGE HEIGHT (Ø 570 MM) mm	AIR FLOW RATE m ³ /h	FAN	POWER kW/rpm	ΔP AVAILABLE mm H ₂ O	MAX LOAD Kg/m ²	A mm	B mm
ZB/POL/JET1	33,5	700	3600	E 353	3/2800	70	150	1210	950
ZB/POL/JET15	57	1300	5200	E 402	4/2800	90	150	1760	1500
ZB/POL/JET2	77	1700	6300	E 403	5,5/2800	90	150	2160	1900

ZB/POL/JET/C [Suction benches for powders (5–30 µm UNI 11304-1), with cartridge and compressed air cleaning. For centralized plants, without fan]

MODEL	Ø IN mm	FILTERING SURFACE m ²	CARTRIDGE HEIGHT (Ø 570 MM) mm	MINIMUM RECOMMENDED AIR FLOW RATE m ³ /h	ΔP STATIC mm H ₂ O	MAX LOAD Kg/m ²	A mm	B mm
ZB/POL/JET1C	250	33,5	700	3600	90	150	1210	950
ZB/POL/JET15C	300	57	1300	5200	90	150	1760	1500
ZB/POL/JET2C	350	77	1700	6300	90	150	2160	1900

COMPONENTS AND DIMENSIONS

1. Removable suction walls
2. Suction grilles
3. Cartridge filter
4. Collection drawer
5. Suction inlet
6. Wall fixing clip
7. Cleaning management timer
8. Compressed air tank



OPTIONAL

- **[ZB/POL/ATEX]** Atex Ex II 3D version
- **[ZB/POL]** Bench execution
- **[CUP/LEXAN]** Lexan upper dome
- **[CUP/PO]** Lexan upper dome and sliding front door
- **[GRL]** Wooden grid, size of strips 35x30 mm
- **[APE/LAT]** Hinged side walls for side opening
- **[PPF]** Anti-scratch perforated polypropylene top (from 1000 mm to 3000 mm)

SPARE PARTS

- **[CAR]** Aluminised non-woven fabric cartridge, Ø 570 mm, (ht. from 700 mm to 1700 mm)
- **[P/ZB]** Perforated sheet top (from 1 to 2 meters)